

Capital Asset Advisory Committee  
2018 Capital Improvement Program  
Financial Status June 30, 2020

July 2, 2020

# 2018 CAPITAL IMPROVEMENT PROGRAM – FINANCIAL STATUS 6/30/2020

## Revenue

---

|                         |  |
|-------------------------|--|
| \$ (326,490,000)        | First Bond Issuance  |
| \$ (50,165,349)         | Premium on First Bond Issuance   |
| \$ (11,646,527)         | Interest Through May 31  |
| \$ (20,900,481)         | Fiscal Year 2020 Capital Transfer (COP Principal & Interest Payment Removed) |
| <b>\$ (409,202,357)</b> |  |

## Expenses

---

### As of June 30, 2020

|                |                                 |
|----------------|---------------------------------|
| \$ 126,558,504 | Total Expended - All projects   |
| \$ 157,681,682 | Total Encumbered - All projects |

### Charter Projects

|               |                            |
|---------------|----------------------------|
| \$ 25,163,874 | Total Expended - Charter   |
| \$ 6,319,367  | Total Encumbered - Charter |

### As of May 31, 2020

|                |                                 |
|----------------|---------------------------------|
| \$ 109,417,007 | Total Expended - All projects   |
| \$ 147,814,548 | Total Encumbered - All projects |

|               |                            |
|---------------|----------------------------|
| \$ 24,524,558 | Total Expended - Charter   |
| \$ 2,251,911  | Total Encumbered - Charter |

# 2018 CAPITAL IMPROVEMENT PROGRAM – FINANCIAL STATUS 6/30/2020

## Funding Breakdown 2018 Capital Improvement Program

|    |                    |                                    |
|----|--------------------|------------------------------------|
| \$ | 326,490,000        | First Bond Issuance                |
| \$ | 50,165,349         | Premium on First Bond Issuance     |
| \$ | 11,646,527         | Bond Interest Through May 31, 2020 |
| \$ | 20,900,481         | FY 2020 Capital Transfer           |
| \$ | <b>409,202,357</b> | <b>Funds to Date</b>               |
| \$ | 240,510,000        | Estimated Second Bond Issuance     |
|    | TBD*               | Premium on Second Bond Issuance    |
|    | TBD*               | Future Bond Interest Earnings      |
| \$ | 104,502,405        | 5 Years Capital Transfer           |
|    | TBD*               | Interest on Capital Transfer       |
| \$ | <b>754,214,762</b> | <b>Preliminary Total</b>           |

TBD\* To Be Determined

# 2018 CAPITAL IMPROVEMENT PROGRAM – FINANCIAL STATUS 6/30/2020

## **Additions, New Buildings & In Design to Bid Late Summer / Fall**

### **Additions**

Bell MS Addition - Bid Date July 2020

Foster ES Addition – Bid Date October 2020

Wayne Carle MS Addition – Bid Date September 2020

Manning K8 Addition - Bid Date July 2020

Parmalee ES Addition - Bid Date September 2020

### **New Building**

CTE South - Bid Date August 2020

### **In Design**

Pomona High School Addition/Renovation

Jefferson High School Addition/Renovation – GMP July 2020

Lumberg Elementary School Addition/Renovation

### **Fall Design Starts**

Marshdale Elementary School Replacement

Prospect Valley Elementary School Replacement

Ralston Valley HS Addition/Renovation

Standley Lake HS Addition/Renovation

# 2018 CAPITAL IMPROVEMENT PROGRAM – FINANCIAL STATUS 6/30/2020

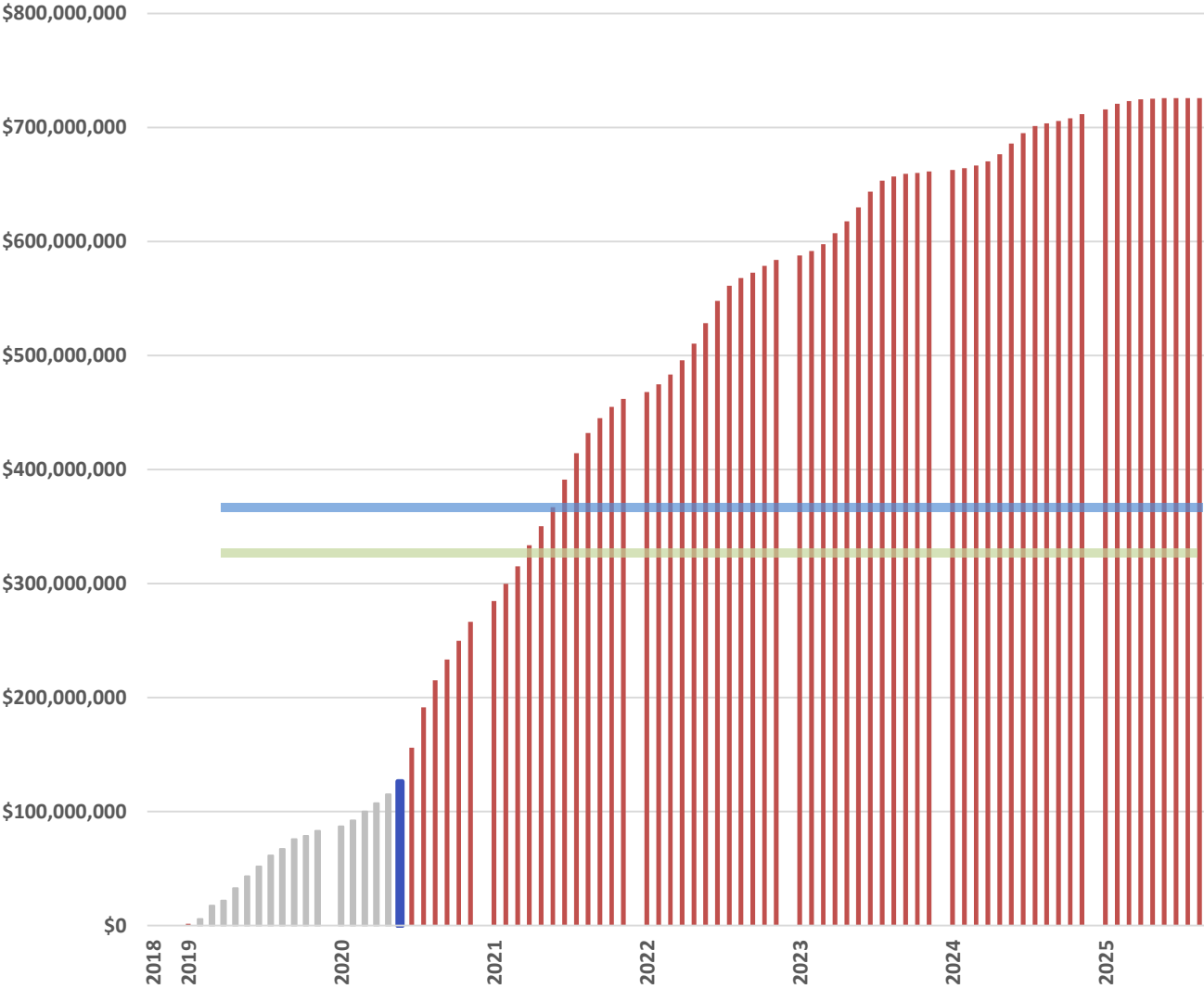
## **Under Construction:**

|   |                        |
|---|------------------------|
| Arvada HS Addition / Renovation           | Complete August 2020   |
| Three Creeks K8 Addition                  | Complete               |
| Wilmot ES Addition / Renovation           | Complete August 2020   |
| Kendrick Lakes ES Replacement             | Complete December 2020 |
| Columbine HS Addition / Renovation        | Complete July 2021     |
| Green Mountain HS Addition / Renovation   | Complete July 2021     |
| Conifer HS Addition / Renovation          | Complete July 2021     |
| 6 HS Artificial Turf & Tracks             | Complete August 2020   |
| Alameda International Jr./Sr. High School | Complete August 2022   |

## **Furniture:**

- 14 replacements
- Columbine HS Partial Replacement
- Green Mountain HS Partial Replacement

# 2018 CAPITAL IMPROVEMENT PROGRAM – FINANCIAL STATUS 6/30/2020



# CAPITAL IMPROVEMENT PLAN – FINANCIAL STATUS 5/31/2020

## Impact of COVID-19 Virus

To date there has been minimal impact from Covid-19 on the availability of labor or materials to on-going projects.

Projects in design or under construction are continuing normally.



# CAAC Construction Update

7-2-2020





# 2020 - PROJECTS

|          |                     |
|----------|---------------------|
| 58 of 88 | Elementary Schools  |
| 11 of 15 | High Schools        |
| 6 of 17  | Middle Schools      |
| 2 of 2   | 7-12 Schools        |
| 2 of 6   | K-8 Schools         |
| 7 of 18  | Option Schools      |
| 1 of 4   | Athletic Facilities |

# Alameda HS – Addition WOLD – CMGC Phipps



# Conifer HS – Addition Cannon – CMGC FCI

## Construction



LIGHT - ADD POWER & DATA  
- SECOND EX-TRND FROM CLASSROOMS IS  
ALLOWED THRU INTERIORING CLASSROOM  
- EXISTING CEILING LIGHT FIXTURES AND  
MECHANICAL SYSTEM TO REMAIN.

# Green Mountain HS – Addition MOA – CMGC GE Johnson

Construction



# 2020 HS Field Improvements Green Mountain HS HCM – CMGC ECI

Construction



New Tennis Courts



Old Demo'd Tennis Courts



# Columbine HS – Addition EIDOS – CMGC Swinerton

Construction



# 2020 HS Field Improvements Columbine HS HCM – CMGC ECI

Construction



# 2020 HS Field Improvements A WEST HCM – CMGC ECI

Construction





# 2020 HS Field Improvements

## Golden HS

### HCM – CMGC ECI

Construction



# 2020 HS Field Improvements Pomona HS HCM – CMGC ECI

Construction

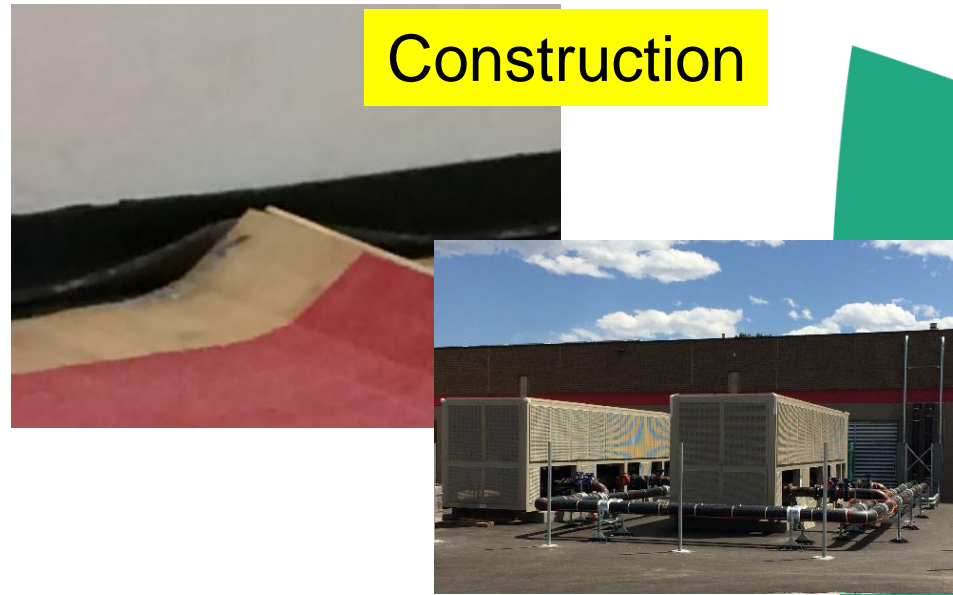


# 2020 HS Field Improvements Standley Lake HS HCM – CMGC ECI

Construction



# Arvada HS - Addition HCM – CMGC Saunders



Complete

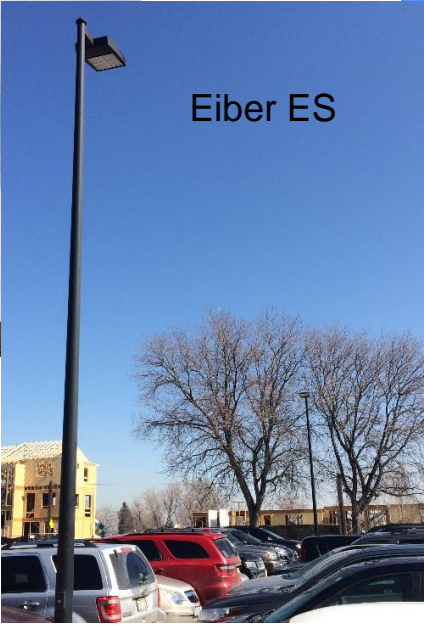
# District Wide LED Site Lighting Ackerman – Piper Electric



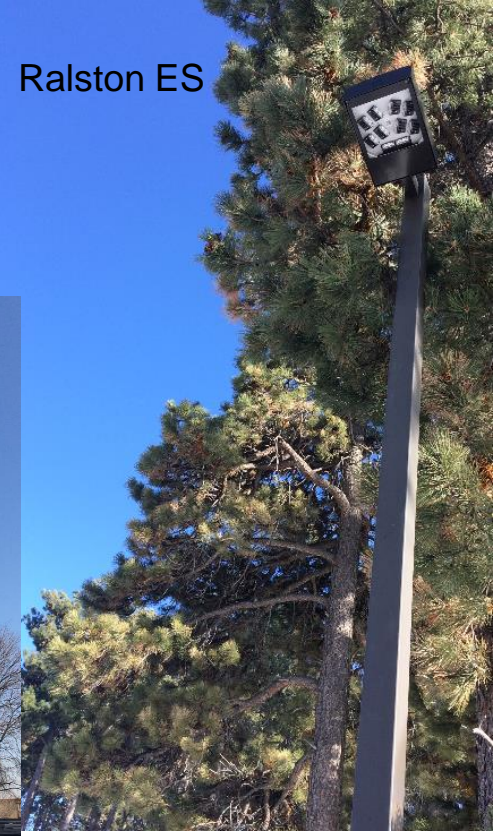
Welchester ES



Foothills ES



Eiber ES



Ralston ES

# Security Glass Installation 14 - Elementary Schools

Kyffin ES  
Complete

Mitchell ES  
Complete

Stevens ES  
Complete

Thomson ES  
85%

Peck ES  
Complete

Warder ES  
Complete

Secrest ES  
Complete

Wilmore Davis  
Complete

Grn Mtn ES  
Complete

Elk Creek ES  
50%

Shelton ES  
Complete

Edgewater ES

Slater ES  
Complete

Shaffer ES



# Security Camera Installations

## Elementary Schools – Final Installations

## Middle Schools – Starting



# West Jefferson MS – Upgrades Cannon – CMGC FCI





# Three Creeks K8 – Addition HCM – CMGC Phipps

Complete  
Punch List



Construction  
August 2020  
Completion

# Wilmot ES – Addition DLR – CMGC Himmelman



# DW LED - 18 Schools

## Ackerman – CMGC Weifield

Construction



Westridge ES



Ryan ES

1. Columbine Hills ES
2. Deane ES
3. **Devinny ES**
4. Dennison ES
5. Fitzmorris ES
6. Kullerstrand ES
7. Lasley ES
8. Maple Grove ES
9. Patterson International
10. **Peck ES**
11. **Powderhorn ES**
12. **Ryan ES**
13. Secrest ES
14. **Sheridan Green ES**
15. **Stott ES**
16. Vanderhoof ES
17. Westgate ES
18. **Westridge ES**

Construction

Dec. 2020  
Completion

# Kendrick Lakes ES – Replacement Larson Incitti – GC Roche



# DW Roofing I – Green Mtn, Lasley WJE – CMC & United Materials

Green Mountain ES



Construction

Green Mtn ES  
35%

Lasley ES  
25%

Lasley ES



Complete

# Chiller Replacement – Golden HS Columbine – K&M

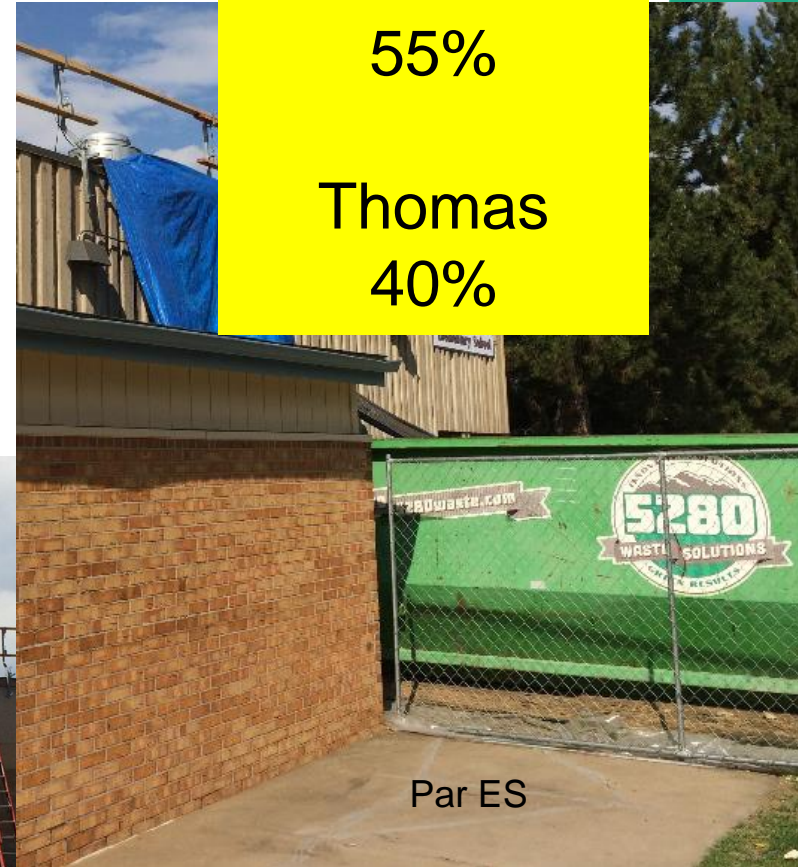


# DW Roofing I - Patterson ES, Par ES, Thomas ES WJE -United Materials, Flynn

Construction  
Parr 90%

Patterson  
55%

Thomas  
40%



# DW Mechanical – Patterson ES Columbine - Braconier





Construction  
Set RTU  
7-1 to 7-6

# DW Mechanical – Stott ES RTU, Columbine - Braconier



Construction  
Set RTU  
7-1 to 7-6

# DW Mechanical – Ryan ES RTU

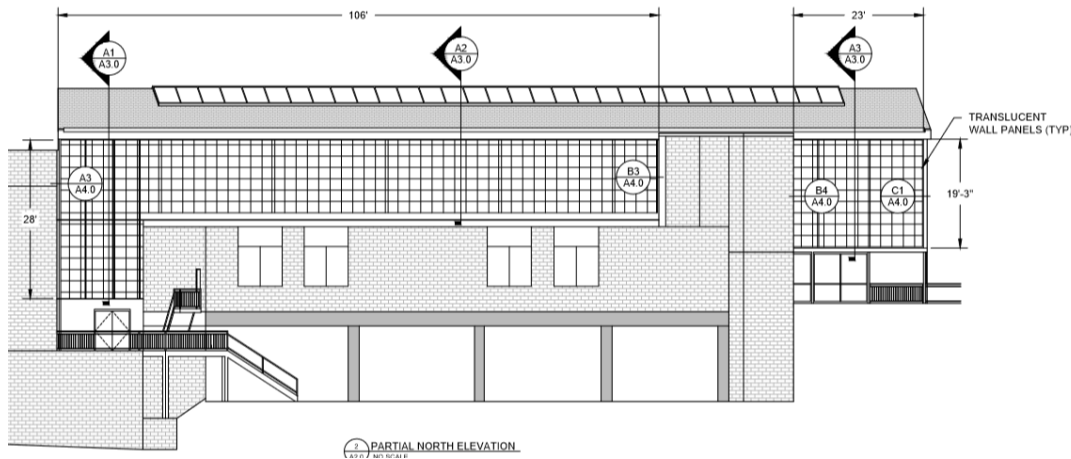
## Columbine - Braconier



# DW Roofing II – Evergreen HS Rooftech –Powers

Construction  
\$148,700  
EHS

Start 7/6



# DW Roofing II – Kullerstrand ES

Rooftech – Grabau

Construction

70%  
complete



# DW Roofing II – Carmody MS Rooftech - B&M

Construction

40%  
Complete



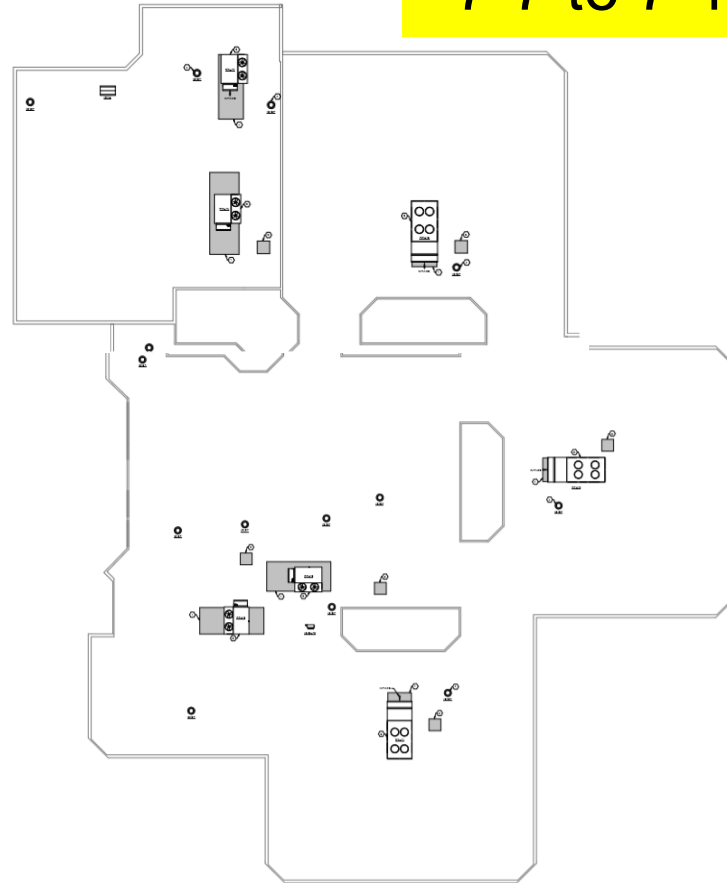
# Trailblazer Locker Room & Press Box Mellin & Assoc. – WE O’Neal



# AHU Replacement - Westridge ES Branch Pattern - JCOR

Construction

Set RTUs  
7-7 to 7-10



# DW Playgrounds

Allendale ES , Stott ES , Vanderhoof ES

Design Concepts – Richdale,



Allendale ES



# DW Playgrounds

Kendallvue ES, Stony Creek ES, Westridge ES

## Design Concepts –T2



# DW Playgrounds

Sheridan Green, Fletcher Miller

## Design Concepts –Goodland



Fletcher Miller

# Eiber ES AMD - Himmelman



# Construction

## Belmar ES AMD – Palace Construction



DW Paving I –

Columbine Hills ES  
Lawrence ES

Complete

Dadey –

Straightline



Lawrence ES



Columbine Hills ES

# Green Gables ES Upgrades Sybazz – Himmelman

## Construction



# Hutchinson ES Upgrades Sybazz – Himmelman

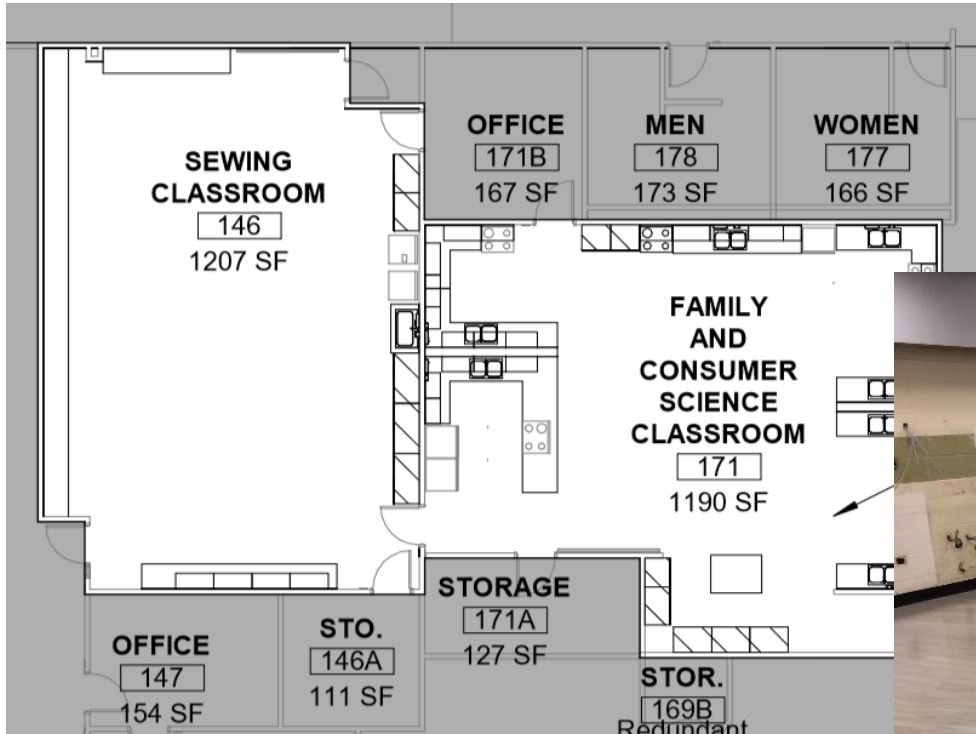
Construction



# Ken Caryl – Signage & FACS Room Upgrades

Construction

## HCM – Single Track





# Dutch Creek ES – Upgrades

Cunningham Group – HPM

Construction



# Adams ES – Upgrades RB+B – Palace Construction

Construction



# Lukas ES – Upgrades

Construction

## RB+B – Palace Construction



# Semper ES - Upgrades

## RB+B – Palace Construction

Construction



# Witt ES – Upgrades

Construction

## RB+B – Palace Construction



# DW Paving II – Bradford Int, Ryan ES, Mitchell ES, Shelton ES

## JVA – Martin Marietta Materials

Construction



Bradford Int



Ryan ES



Mitchell ES



# Ralston ES, Upgrades CRP – HPM

Construction



# Foothills ES ES Upgrades CRP – Bryan

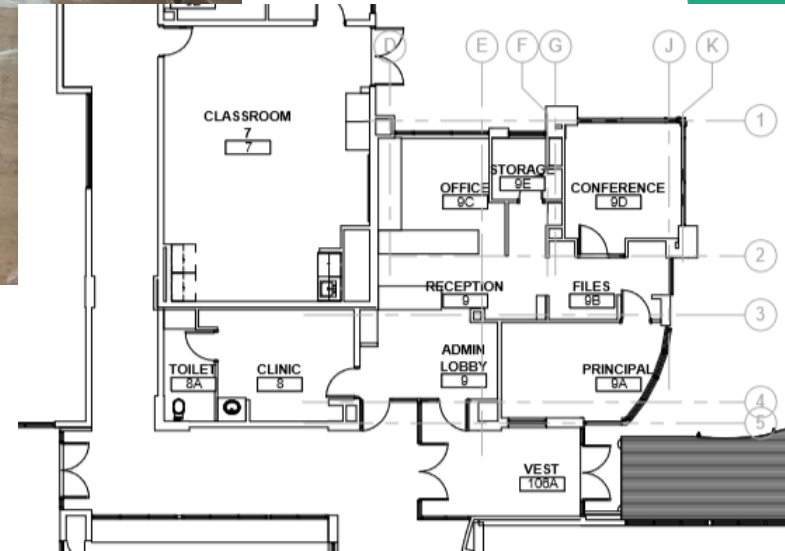
Construction





# Vivian ES Upgrades CRP – Bryan

Construction  
RTU - OCT



# Welchester ES Upgrades CRP – Bryan

Construction  
RTU - OCT



# DW Flooring I - Fletcher Miller, Lasley ES, Free Horizon & Fitzmorris ES Farnsworth Group – HPM Contracting



Fitzmorris ES



Fletcher Miller

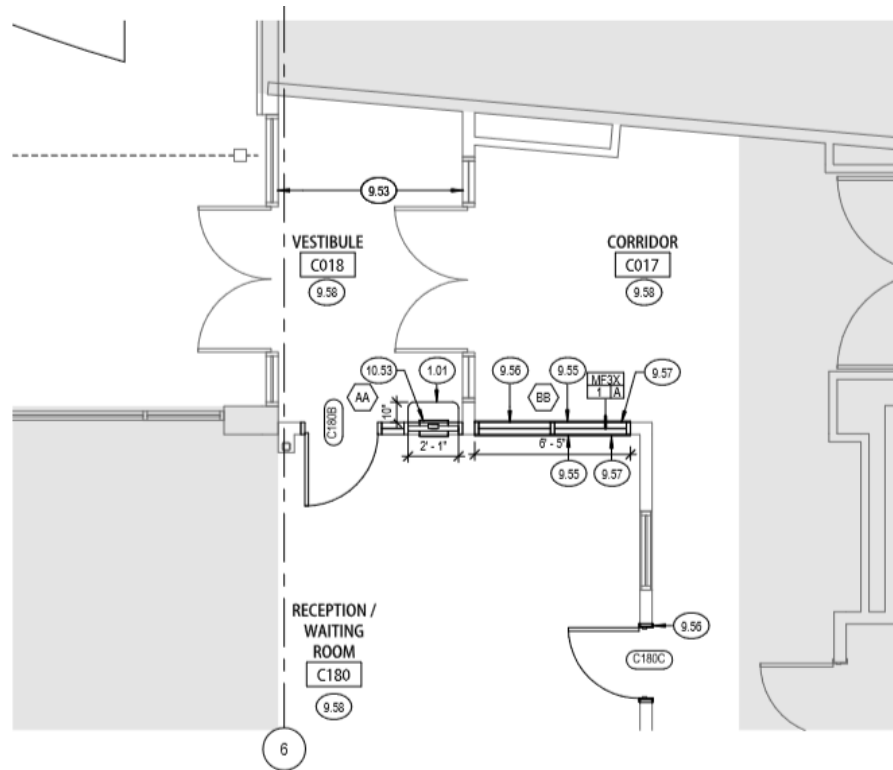


Free Horizon

# Hackberry Hill ES Upgrades

Construction

RTA – GH Phipps



1 FLOOR PLAN - SECURITY VESTIBULE  
A111 1/4" = 1'-0"



# Arvada K8, Upgrades RTA – GH Phipps

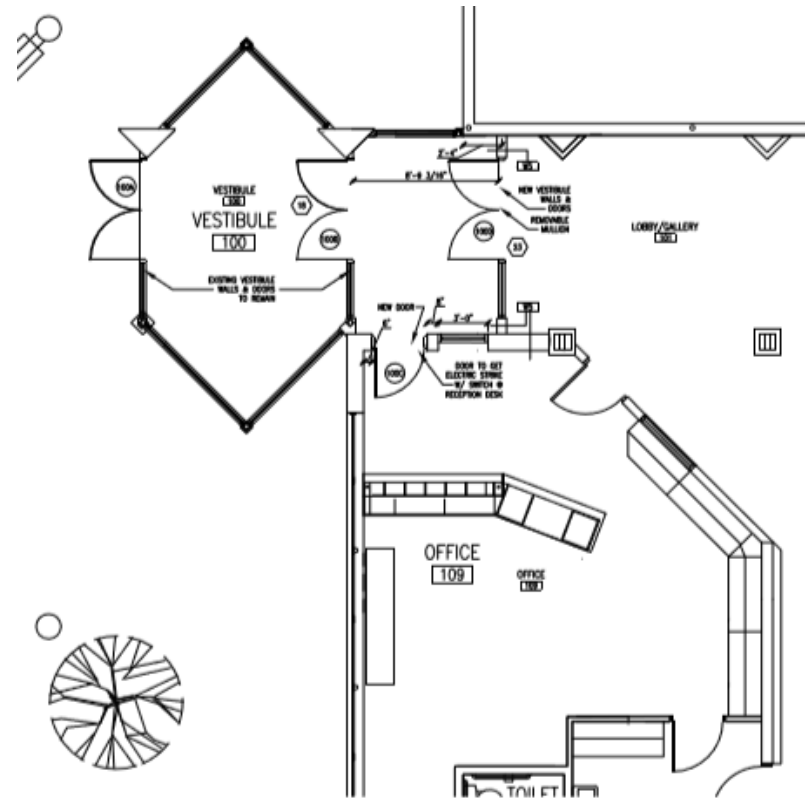
Construction  
Chiller 7/24



# Fremont ES – Upgrades

Construction

Jordin – P.G. Arnold



A1 VESTIBULE PLAN  
A104 1/4"=1'-0"

# Coronado ES Upgrades

OZ – W.E. O'Neil

Construction  
Bid 3/27/20

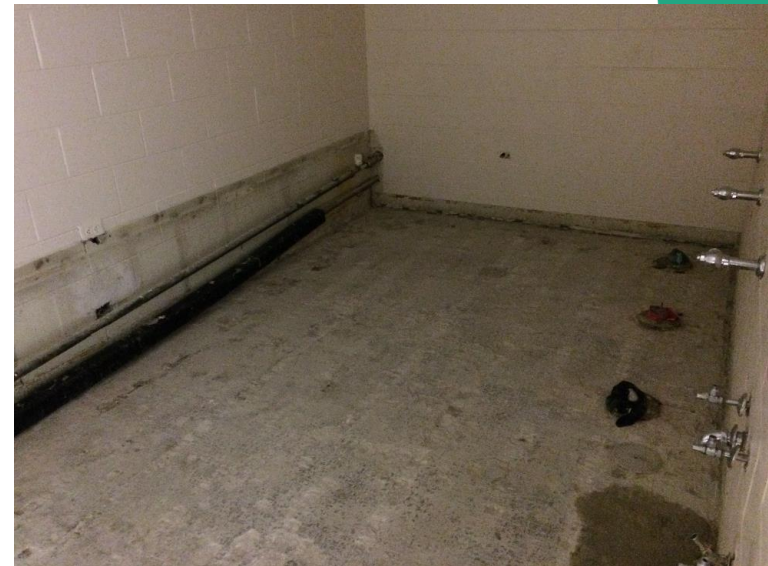
\$1,657,000  
\$35.60/sf



# Columbine Hills ES Upgrades

Construction

OZ – W.E. O’Neil





# Stober ES Upgrades

## LOA – Golden Triangle

Construction  
Alum SF - Aug



DW Flooring II - Allendale ES,  
Thomson ES, West Woods ES gym  
Fairmount gym & corridor  
EUA – Colorado Floorworks (FES) – Gary Leimer



Allendale ES



Thomson ES



Fairmount ES

# In Design

## New Construction & Additions

- START Construction SUMMER / FALL 2020

60

# Bell MS – 1 Story, 4 Classroom Addition Eidos – Contractor TBD

Construction  
Documents  
Bid 7/30



Manning Opt – 1 Story –  
7 Classroom Addition  
AMD – Contractor TBD

Construction  
Documents  
Bid 8/13



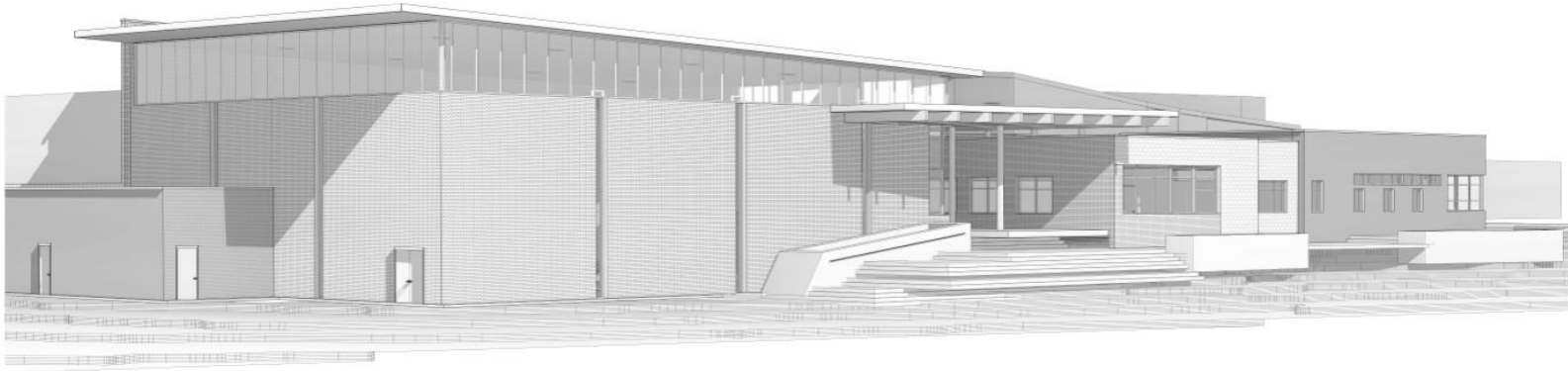
# CTE South – New Building HCM – Contractor TBD

Construction  
Documents  
Bid 8/20



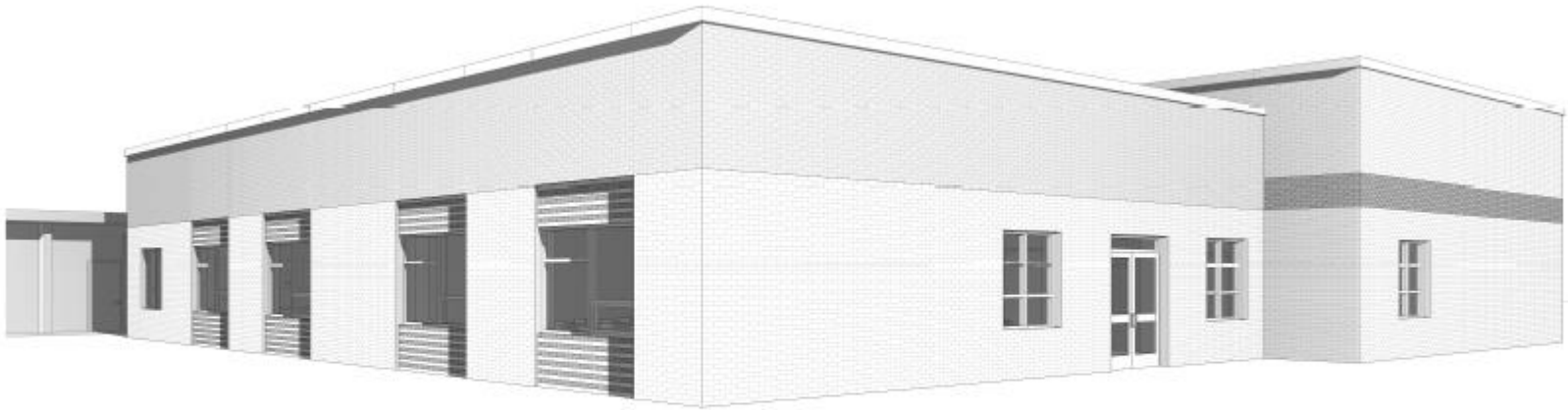
# Jefferson HS – Aux Gym Addition MOA – Haselden

Construction  
Documents



# Lumberg ES – 4 CR Addition MOA – CMGC Haselden

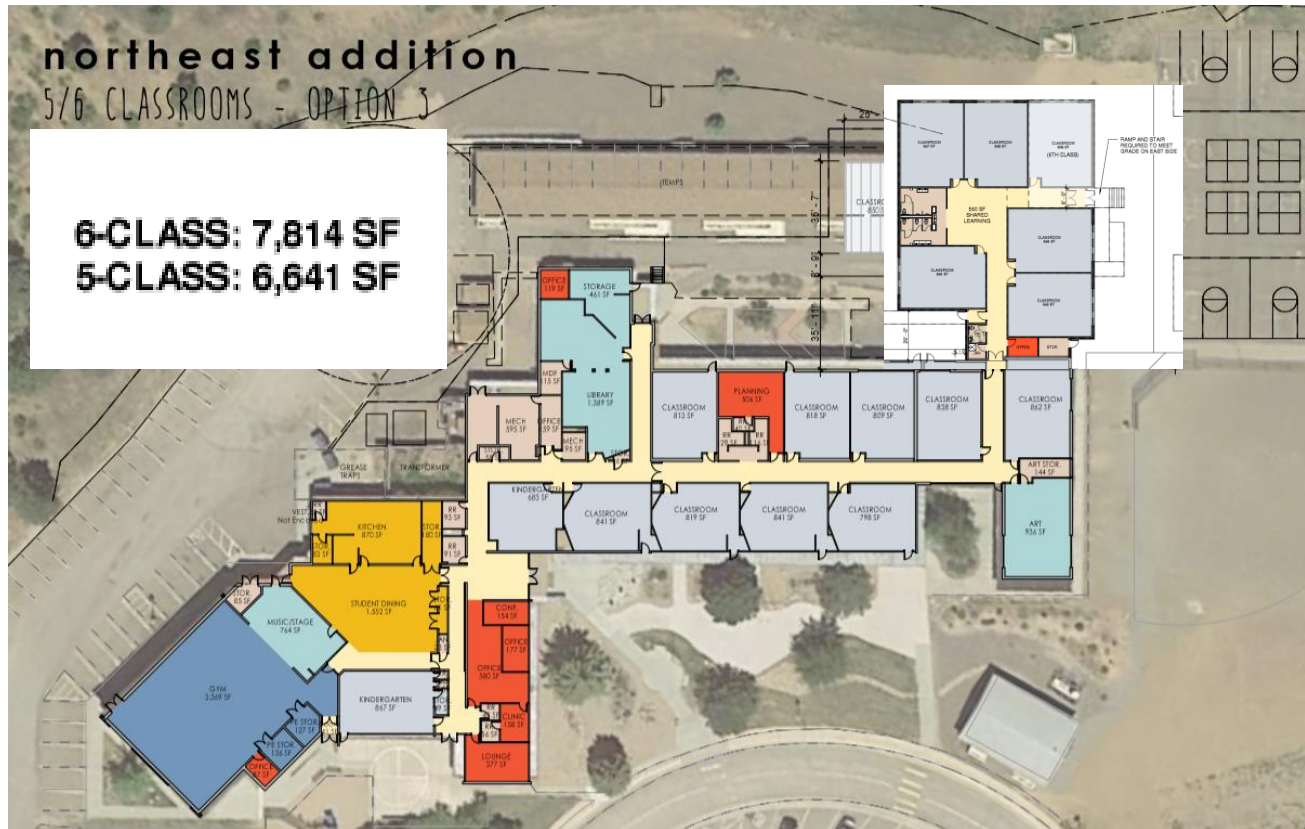
Construction  
Documents





# Parmalee ES – 1 Story – 5/6 Classroom Addition OZ – Contractor TBD

Construction  
Documents  
Bid 9/3



# Wayne Carle – 2 Story – 8 Classroom Addition RB+B – Contractor TBD

Construction  
Documents  
Bid 9/17



# Foster ES – 1 Story – 7 Classroom Addition Larson Incitti – Contractor TBD

Design  
Development  
Bid 10/15



# Furniture

- Arvada HS
- Arvada K8
- Arvada West
- Bear Creek K8
- Belmar
- Columbine Hills
- Columbine HS
- Conifer HS
- Coronado ES
- Creighton MS
- Drake MS
- Dutch Creek
- Eiber ES
- Fairmount ES
- Foothills ES
- Free Horizon
- GMHS
- Green Gables ES
- Hutchinson ES
- Ken Caryl MS
- Kendallvue
- Kullerstrand ES
- Kyffin ES
- Leawood ES
- Lukas ES
- Maple Grove
- McLain HS
- Molholm ES
- Moore MS
- Normandy ES
- North Arvada MS
- Ralston ES
- Ralston Valley HS
- Rooney Ranch ES
- Ryan ES
- Stober ES
- Summit Ridge MS
- Three Creeks K8
- Ute Meadows ES
- West Jeff MS
- Welchester ES
- Westgate ES
- Wilmot ES
- Witt ES

# 2021 Projects (On Deck)

- DW Elevator
- DW Flooring
- DW LED
- DW Mechanical
- DW Paving
- DW Playgrounds
- DW Roofing
- DW Athletic Turf
- Allendale ES
- Carmody MS
- Chatfield HS
- Dakota Ridge HS
- Deane ES
- Dennison ES
- Devinny ES
- Evergreen MS
- Evergreen HS
- Everitt MS
- Fitzmorris ES
- Kullerstrand ES
- Lasley ES
- Lawrence ES
- Maple Grove ES
- **Marshdale ES**
- Miller Special OPT
- Patterson ES
- Pomona HS
- Powderhorn ES
- **Prospect Valley ES**
- Ralston Valley HS
- Ryan ES
- Sheridan Green ES
- Standley Lake HS
- Stott ES
- Vanderhoof ES
- Westridge ES

# Pomona HS – Aux Gym Addition Sybazz – Saunders

Design  
Advisory  
Group



# Next Meeting 8/6/20



JEFFCO PUBLIC SCHOOLS

# 2018 BOND PROGRAM COMMUNICATIONS UPDATE CAPITAL ASSET ADVISORY COMMITTEE JULY 2020

## COMPLETED WORK:

- Published Bond Annual Report:
  - Shared on social media channels
  - Published on [Jeffco Builds website](#)
  - Will be shared in upcoming community newsletters from Jeffco
- Continued production of bond signs
- Worked with Lakewood Sentinel reporter on [Green Mountain construction project story](#)
- Sharing summer construction updates on Jeffco social media channels to keep the community informed of summer progress

## Website analytics:

Jeffcobuilds.org and all pages with "jeffco builds" in the URL (ie sub-pages)

| Jeffco Builds page performance | Page views    | Unique page views |
|--------------------------------|---------------|-------------------|
| May 2020                       | 1,893         | 1,159             |
| June 2020                      | 1,860         | 766               |
| % change                       | 1.4% decrease | 33% decrease      |

## UPCOMING WORK:

- Planning Warren Tech South news story and pitch:
  - Announcing program names
  - Sharing updated renderings
  - Interviews with teachers and principal who will be at Warren Tech South
- Planning site tours of current construction projects for Facebook live videos

**As a part of our 2018 Capital Improvement Program, valued at roughly \$700 million, we are investing \$50 million from our bond in 2020 – with significant work happening during the summer of 2020. These dollars fund improvement projects across our district, including new buildings and additions, educational and athletic facility updates, furnishings and new playgrounds.**

**INVESTING IN OUR ATHLETES**  
Last summer we transformed eight of our school's outdoor athletic facilities – replacing turf fields and older bleachers with artificial turf and all-weather tracks – creating safe and functional spaces that are more durable for our student athletes while meeting the increased demands being placed on athletic facilities.

Jeffco is continuing track and field renovation projects, with many starting before the end of the school year. We are excited for the moment when we can have our students back out on these new tracks and fields for practice and play!

**Track and Field renovations are coming to:**

- Ananda West H.S.
- Columbine H.S.
- Golden H.S.
- Green Mountain H.S.
- Pomona H.S.
- Standley Lake H.S.

Changes are also coming to Jeffco competition arena. Trailblazer Stadium undergoes a dramatic makeover this summer with new locker rooms, press box, and bleachers. These changes will transform the look and feel of the stadium, making it a premiere venue for game day.

**SUPPORTING OUR STUDENTS AT PLAY**  
Playground renovations are taking place at elementary schools across the district over the summer break. These projects include state-of-the-art play and learning structures that are safe and engaging for our students.

- Allendale E.S.
- Vanderhoof E.S.
- Story Creek E.S.
- Sheridan Green E.S.
- Scott E.S.
- Kendallvue E.S.
- Westridge E.S.
- Fletcher Miller E.S.

**SUMMER CONSTRUCTION BY THE NUMBERS**  
The summer of 2020 is our busiest construction season yet, with projects happening at:

- 58 of 88 Elementary Schools
- 11 of 17 High Schools
- 6 of 17 Middle Schools
- 2 of 2 7-12 Schools
- 2 of 6 K-6 Schools
- 7 of 18 Option Schools
- 1 of 4 Athletic Facilities

**WARREN TECH SOUTH – COMING SOON!**  
Back in October of 2018, we announced that our third Warren Tech Campus – our premier Career and Technical Education program – will be built on the Dakota Ridge High School property in Littleton.

Leaders from the school, community, and Jeffco's construction management team have been working collaboratively to design a building that meets the needs of Warren Tech's unique program offerings. The Warren Tech South campus is taking shape – these spaces will house programs in the areas of aviation, design (including audio and lighting design, hospitality, and health sciences), all while offering flexible common spaces for student events and meetings.

Warren Tech South is set to break ground near the end of 2020 and expected to open in the fall of 2021.

**BREAKING GROUND ON NEW ADDITIONS AND SCHOOLS**  
For many of our schools, 2019 was a year of planning for their additions and renovation projects. They worked with architects and their communities to ensure renovations would meet the needs of students now and in the future. These projects mark the beginning of major construction across the district, and we look forward to welcoming students back to school with these totally transformed spaces.

A few of our schools were able to host groundbreaking ceremonies before the beginning of online learning. While others – like Green Mountain High School – took the celebrations online for virtual events. We will share progress on these projects with our community throughout the summer!

Additions (and new school builds) are happening across the district at:

- Ananda H.S.
- Columbine H.S.
- Wilmet E.S.
- Kendrick Lakes E.S. (new building)
- Alameda International H.S.
- Conifer H.S.
- Three Crosses E.S.
- West Jefferson M.S.

**PRIORITIZING SAFETY AND SECURITY**  
This year, we are continuing our commitment to improving our buildings' safety features with the installation of upgraded security glass at levels of our schools. We continue to increase the number of security cameras at all schools, bringing the total upgrades to 11 schools by the end of the year.

Jeffco Public Schools - Colorado  
June 25 at 11:53 AM

Nothing like a good time-lapse video to keep an eye on construction progress! As our contractors begin prepping for their work at Alameda International, they set up a camera so we can follow along. The school is undergoing a major makeover - with a major building addition with classrooms, a library, music/choral suite, new building entry, interior renovations, security enhancements, and updated furnishing. We will be sure to share more videos once the construction is in full swing!

If you want to know more about construction and projects happening across Jeffco, head over to [Jeffcobuilds.org](#). #jeffcobuilds

